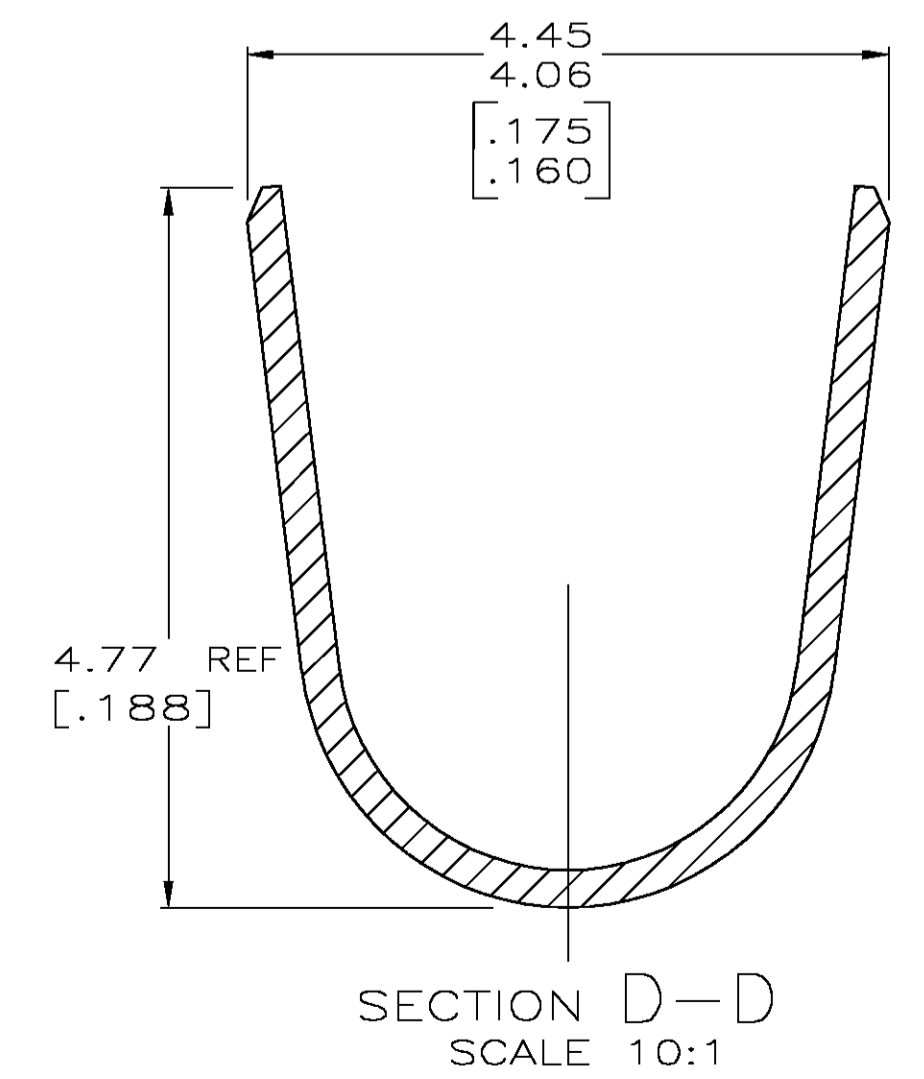
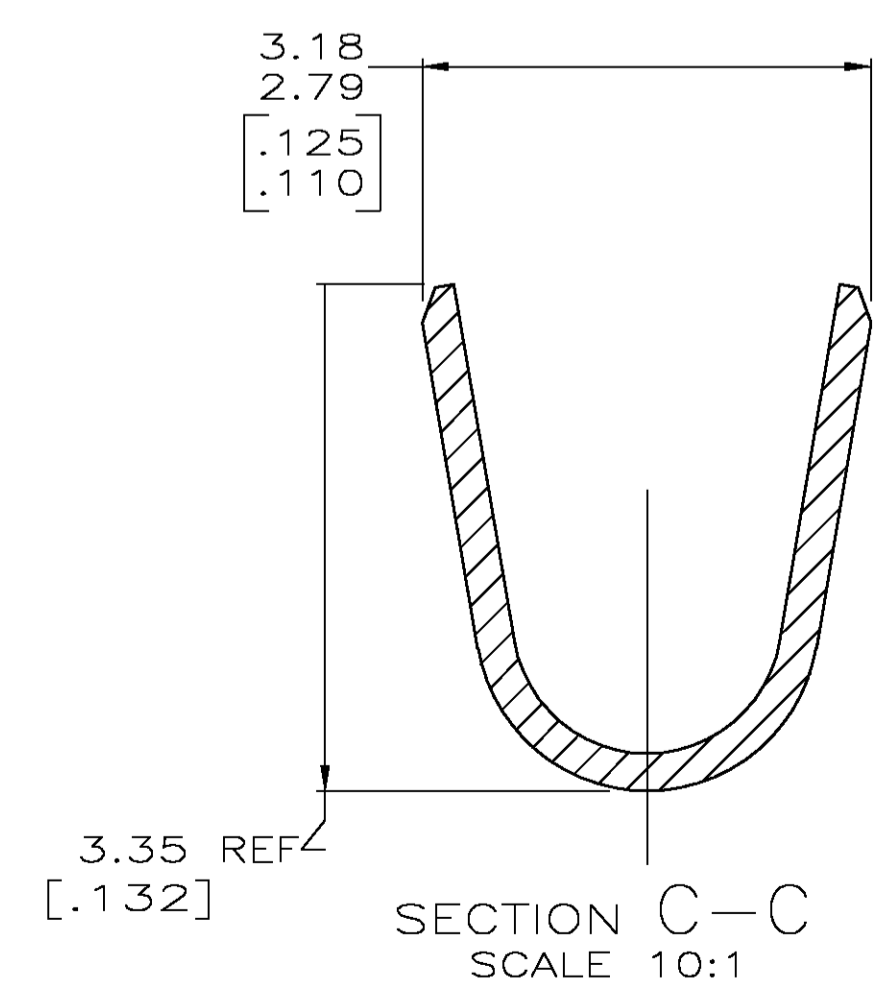
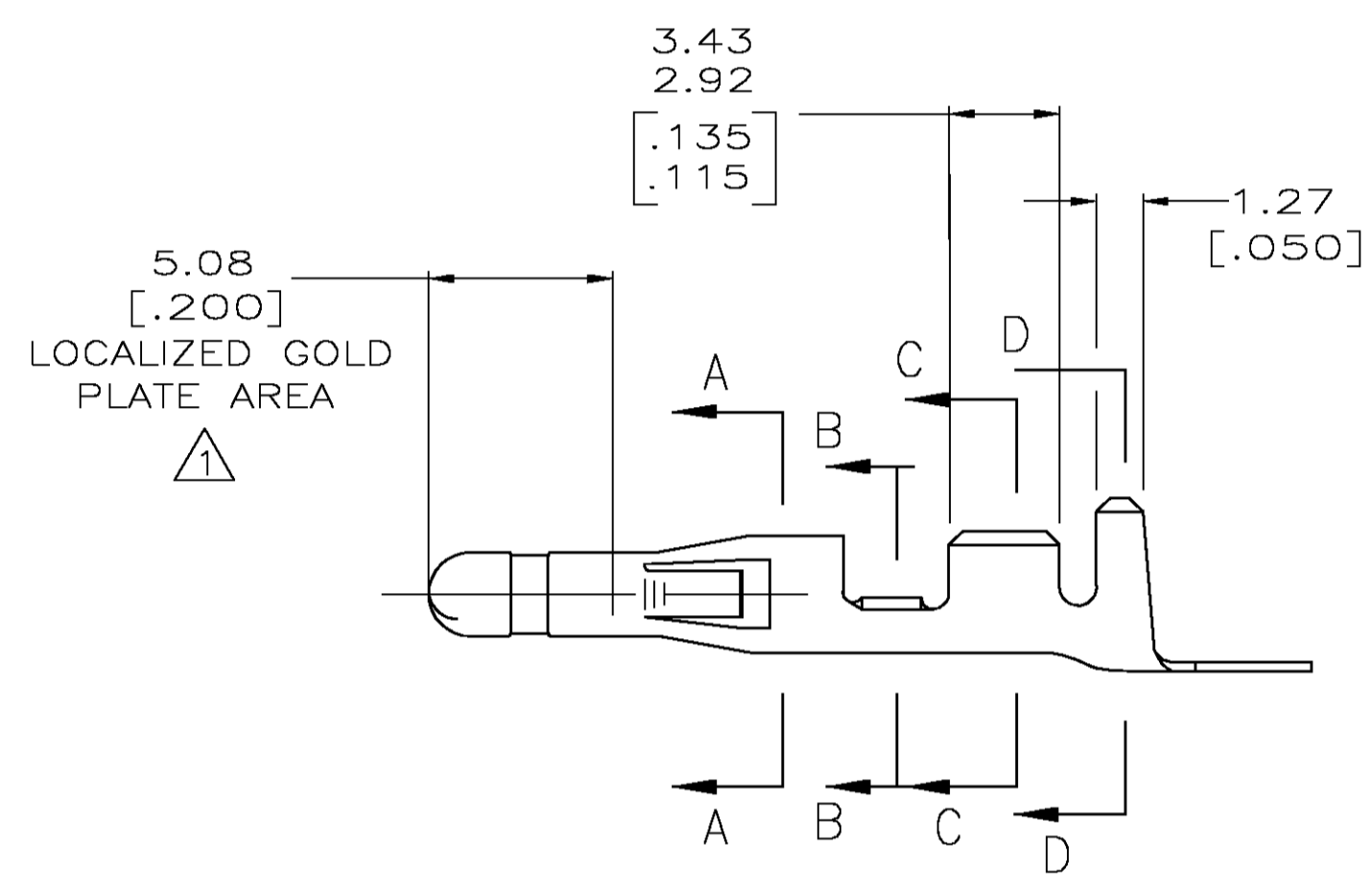
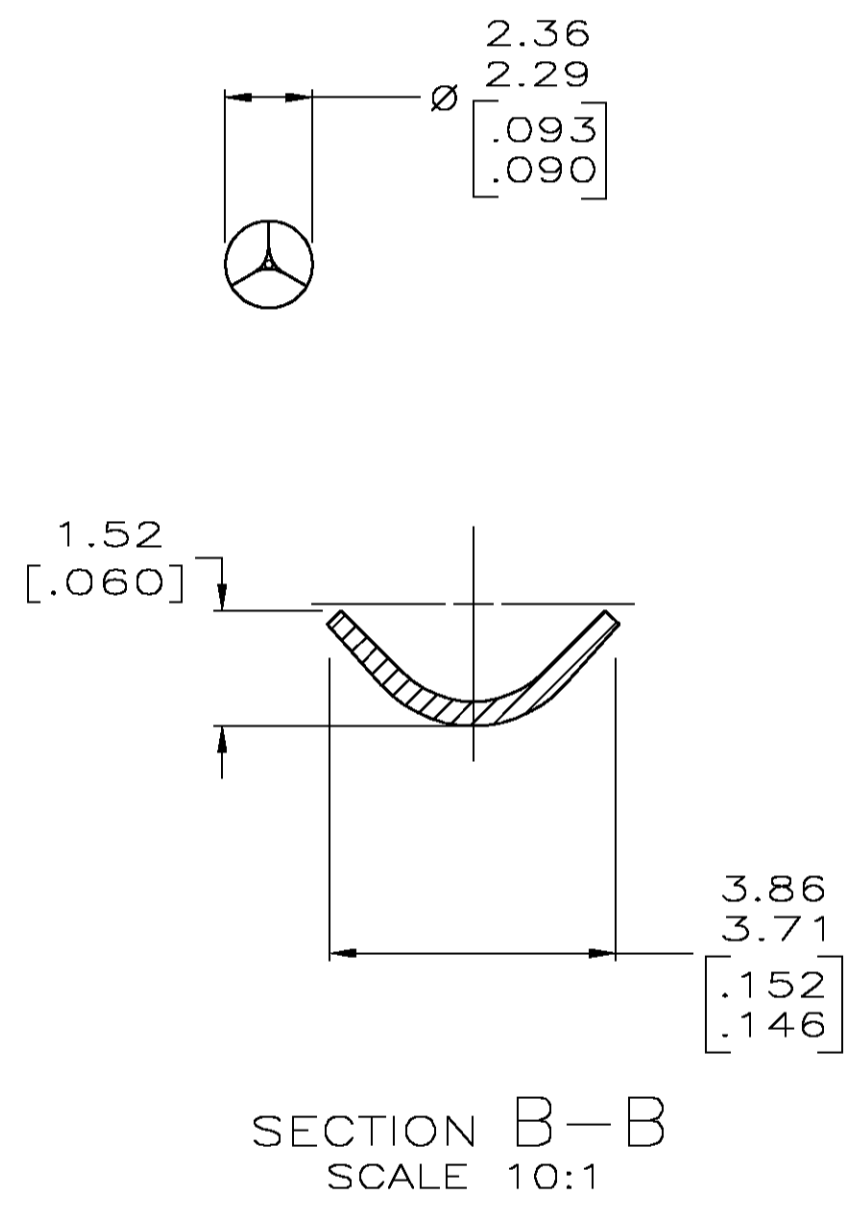
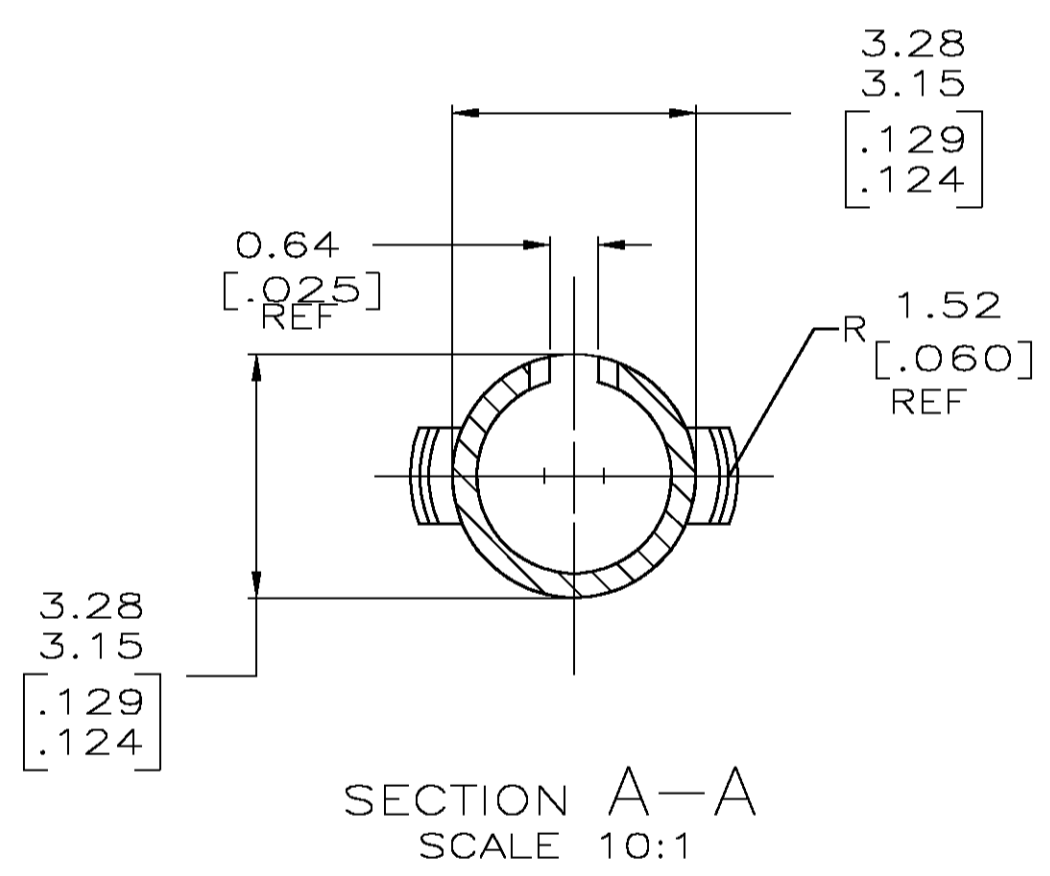
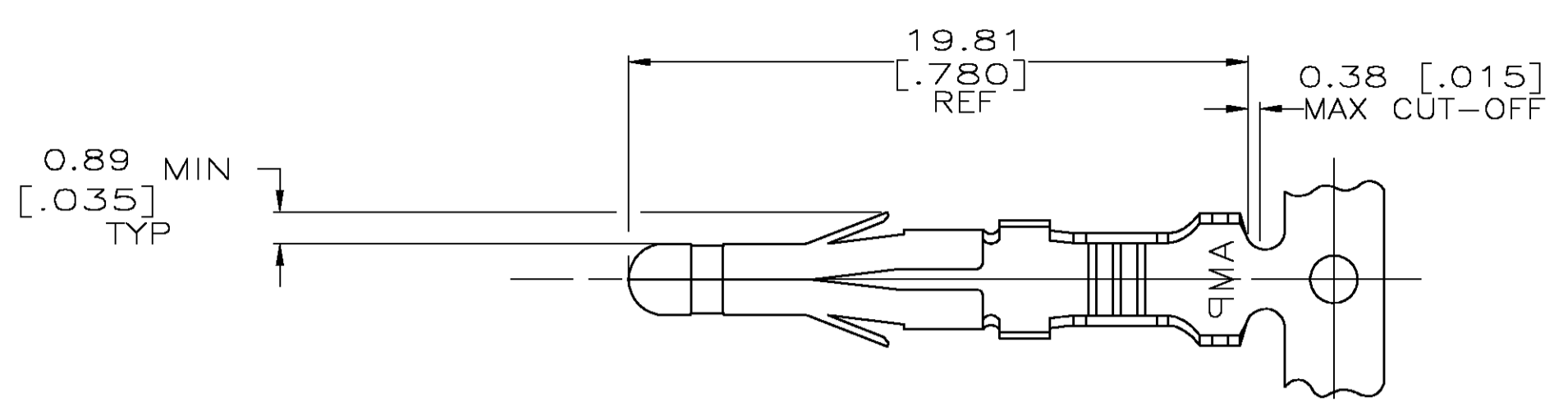


- 1 0.00076 [.000030] MIN GOLD IN LOCALIZED GOLD PLATE AREA OVER 0.00127 [.000050] MIN NICKEL.
- 2 WIRE RANGE: 0.5 -2mm<sup>2</sup> (20-14 AWG).
- 3 INSULATION RANGE: 3.56 [.140] MAX. DIA.
- 4 DIMENSIONS IN BRACKETS ARE IN INCHES.



△	0.25 [.010] BRASS	350416-5
PRE-TIN	0.25 [.010] BRASS	350416-1
FINISH	MATERIAL	PART NUMBER

THIS DRAWING IS A CONTROLLED DOCUMENT.		DNV L. SMITH 2-11-93	Tyco Electronics Corporation Greensboro, NC 27409
DIMENSIONS: mm [INCHES]		CHK R. SWING 2-11-93	
TOLERANCES UNLESS OTHERWISE SPECIFIED:		APVD C. CASH 2-11-93	NAME COMMERCIAL PIN AND SOCKET
0 PLC ± -	1 PLC ± -	PRODUCT SPEC	SIZE A1
2 PLC ± -	3 PLC ± 0.13(.005)	APPLICATION SPEC	CAGE CODE 350416
4 PLC ± -	ANGLES ± -	WEIGHT	DRAWING NO 350416
MATERIAL SEE TABLE	FINISH SEE TABLE	CUSTOMER DRAWING	RESTRICTED TO REV AF
		SCALE 5:1	SHEET 1 OF 1

METRIC